

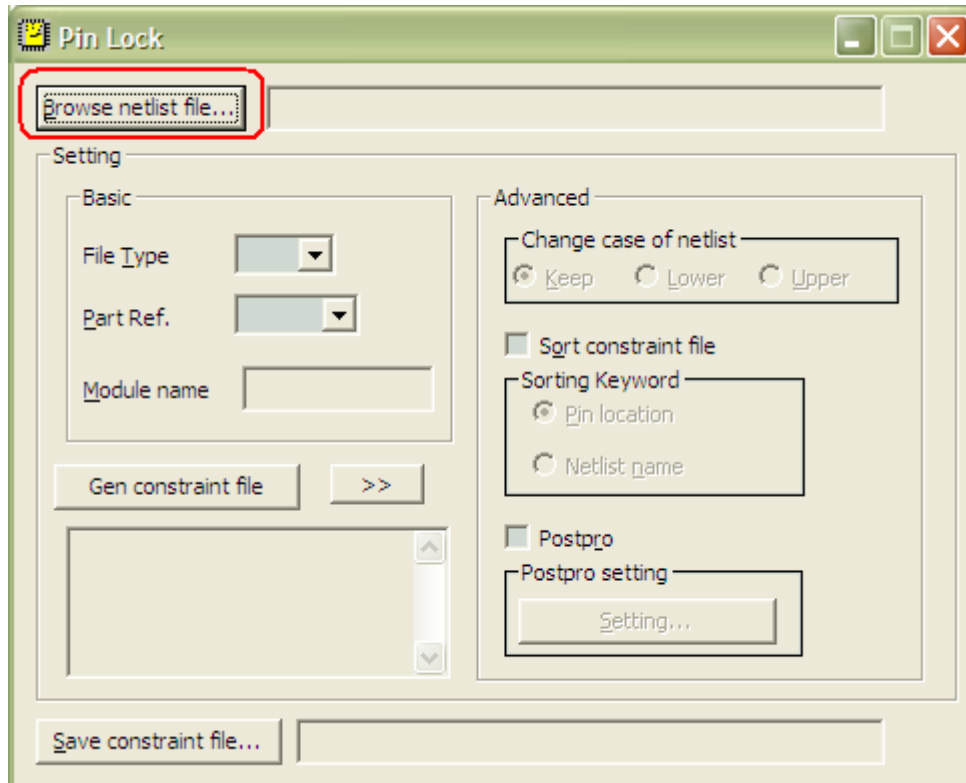
Contents

1, Select Netlist File	2
2, Choose File Type.....	2
3, Select Part Reference	3
4, Run.....	4
5, Save.....	5
Advanced Options.....	6
Change Case of Netlist.....	6
Sort Constraint File	6

Note: There may be some changes between versions. So, your software may look a bit different from this manual.

1, Select Netlist File

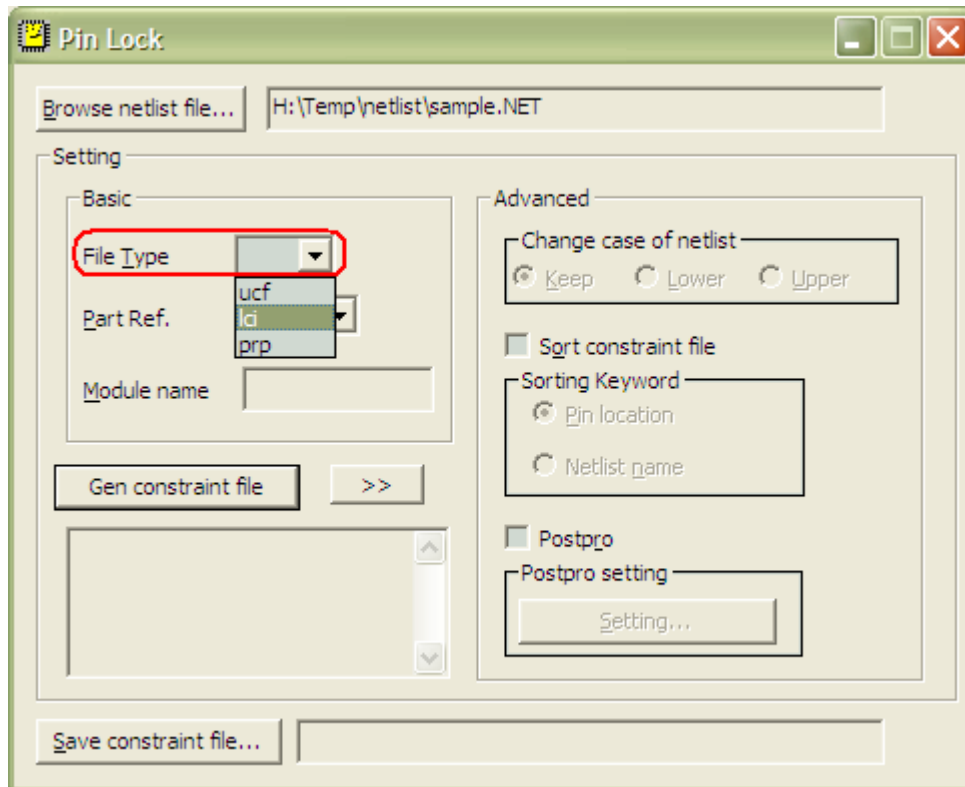
Click **Browse Netlist File...** button. See screenshot below:



The software will parse the netlist file.

2, Choose File Type

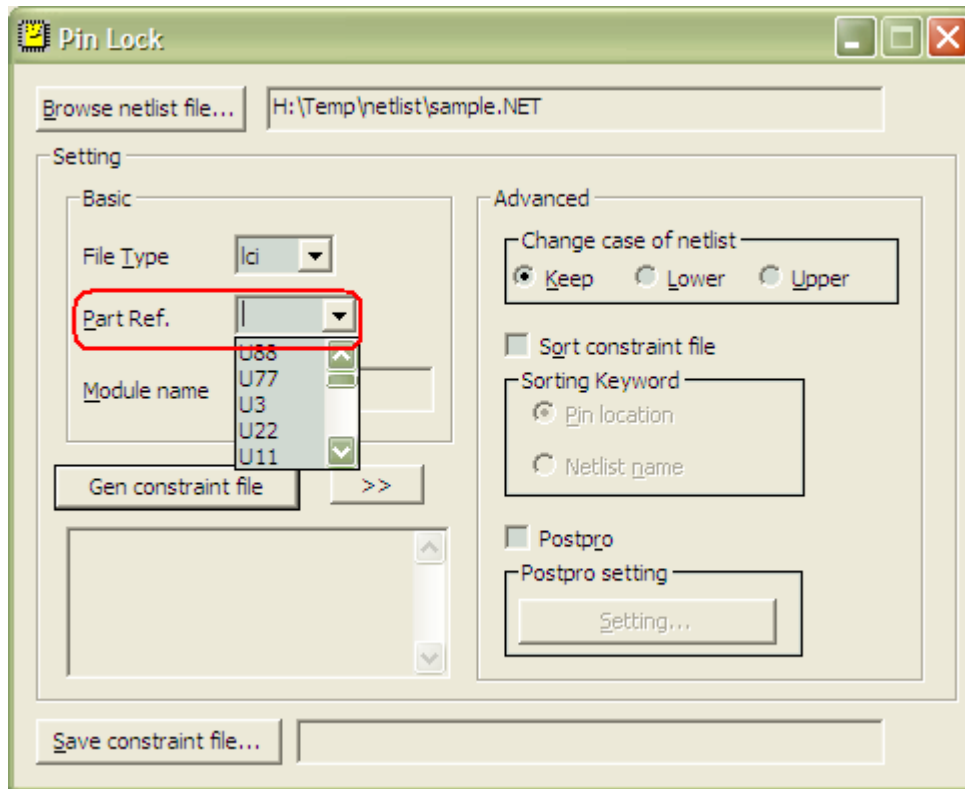
Click **File Type** dropdown button. See screenshot below:



If prp is selected, please input **Module Name**.

3, Select Part Reference

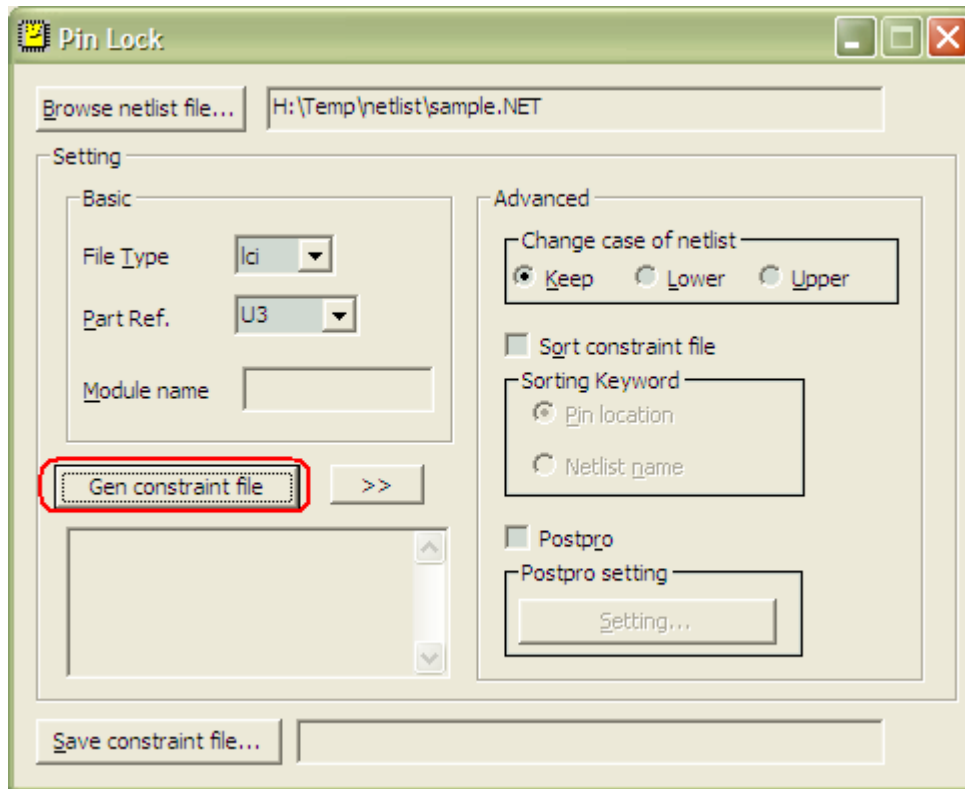
Click **Part Ref.** dropdown button. See screenshot below:



Note: You could input Part Reference in the edit box, or select from the list.

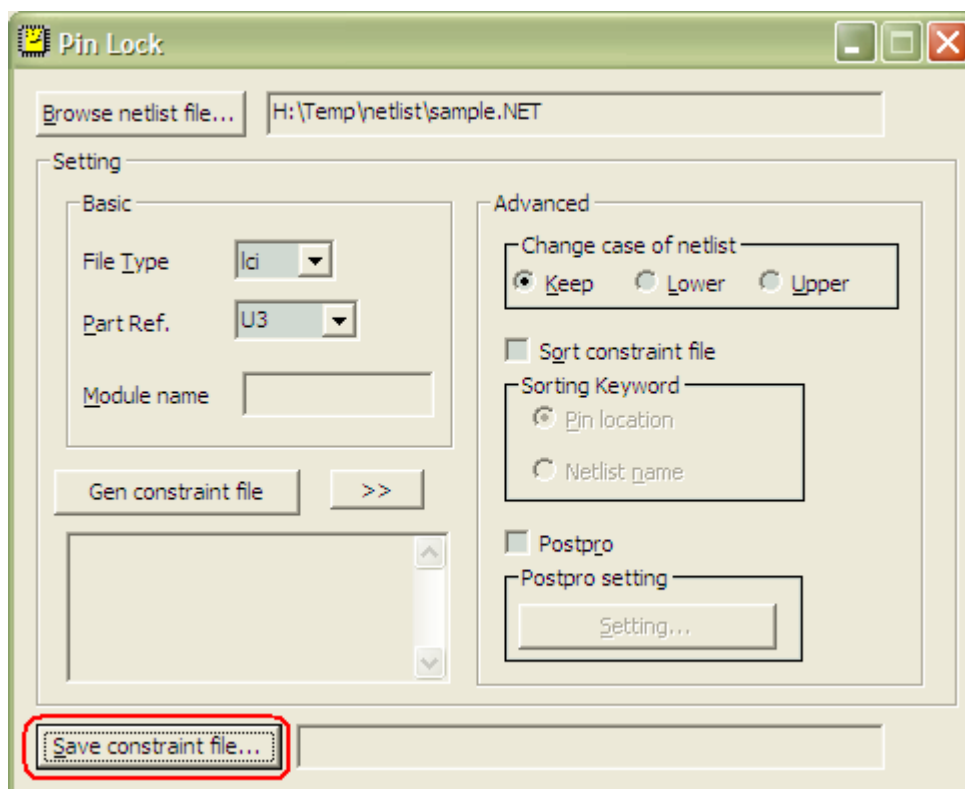
4, Run

Click **Gen Constraint File** button. See screenshot below:



5, Save

Click **Save Constraint File...** button. See screenshot below:



Advanced Options

Change Case of Netlist

(For lci/lct/lco format only)

- **Keep:** Same case as netlist file.
- **Lower:** Change pin name to lower case.
- **Upper:** Change pin name to upper case.

Sort Constraint File

Generated constraint file could be sorted in **Netlist Name** order or **Pin Location** order.

Revision History

Date	Version	Author	Changes
2014/6/9			Add line above footer;
2013/7/29			First release;