

目录

Before Start .....	2
Hardware Connection .....	2
Run the Software.....	2
Here We Go.....	3
Set Cable Description.....	3
Cable Speed .....	5
PHY Address.....	6
Read Register Value .....	7
Write Register .....	8
Error Codes .....	8

*Note: There may be some changes between versions. So, your software may look a bit different from this manual.*

# Before Start

## Hardware Connection

**Attention:**

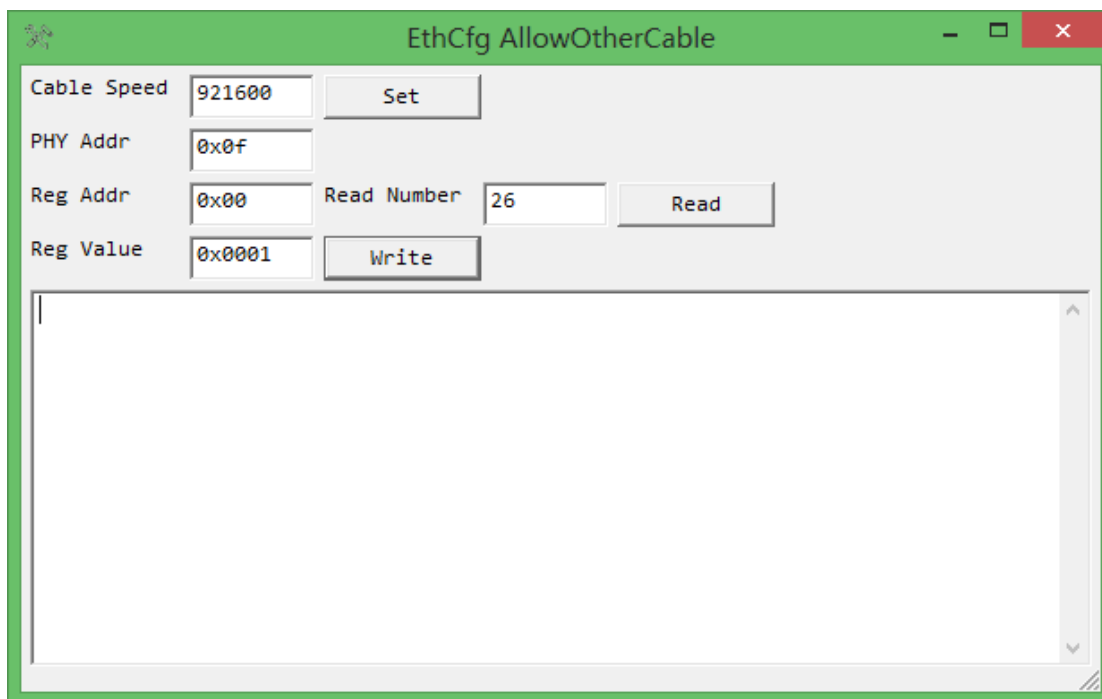
Please make sure *MDC* and *MDIO* signals of target board are 3.3V Tolerant, otherwise you could NOT use WH-USB-HiJTAG cable. Please read cable and software user manual before starting.

Please obey safety requirements and operating instruction of your target system at any time.

1. Power off the target board.
2. Disconnect USB cable from your computer.
3. Connect GND, MDC and MDIO to the target board (no power supply from target board if you are using WH-USB-HiJTAG cable. For other cables, please check user manual).
4. Connect USB cable to your computer.
5. Power on the target board.

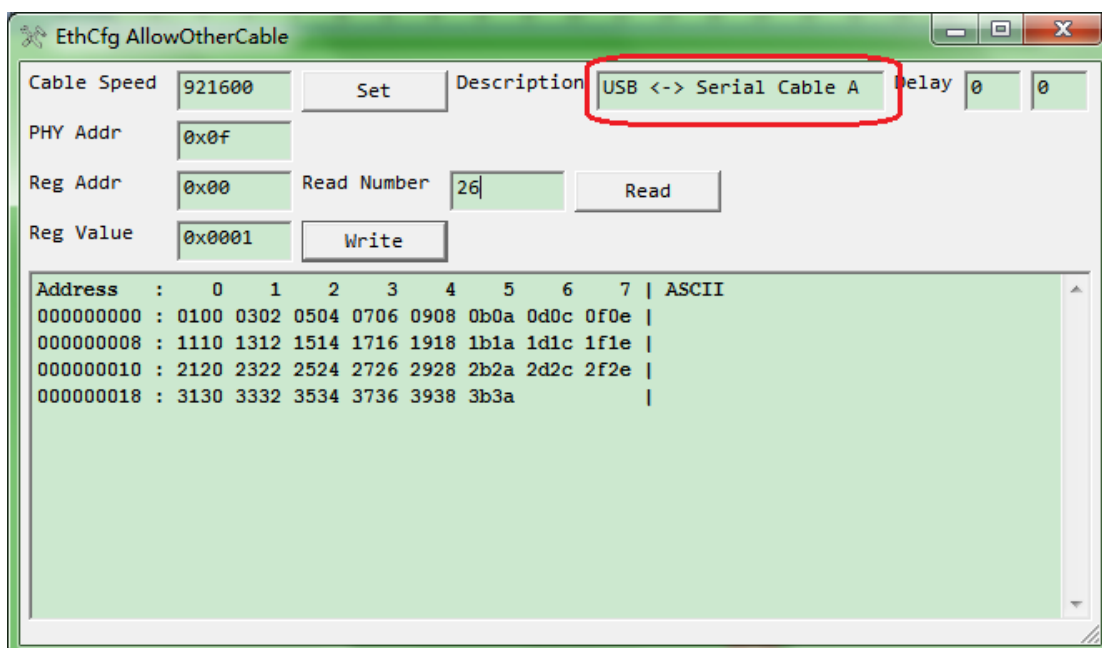
## Run the Software

Clicking loader.exe to start. You should see this main dialog:



## Here We Go

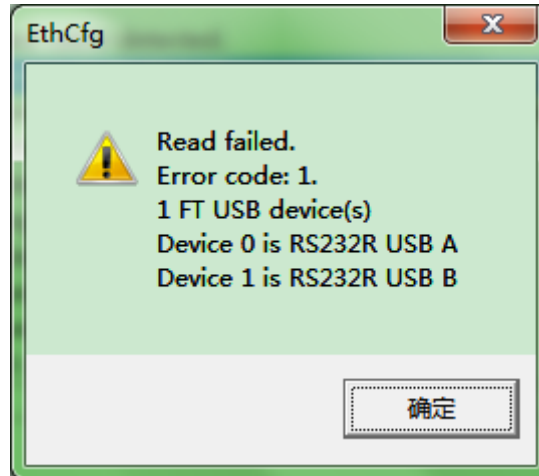
### Set Cable Description



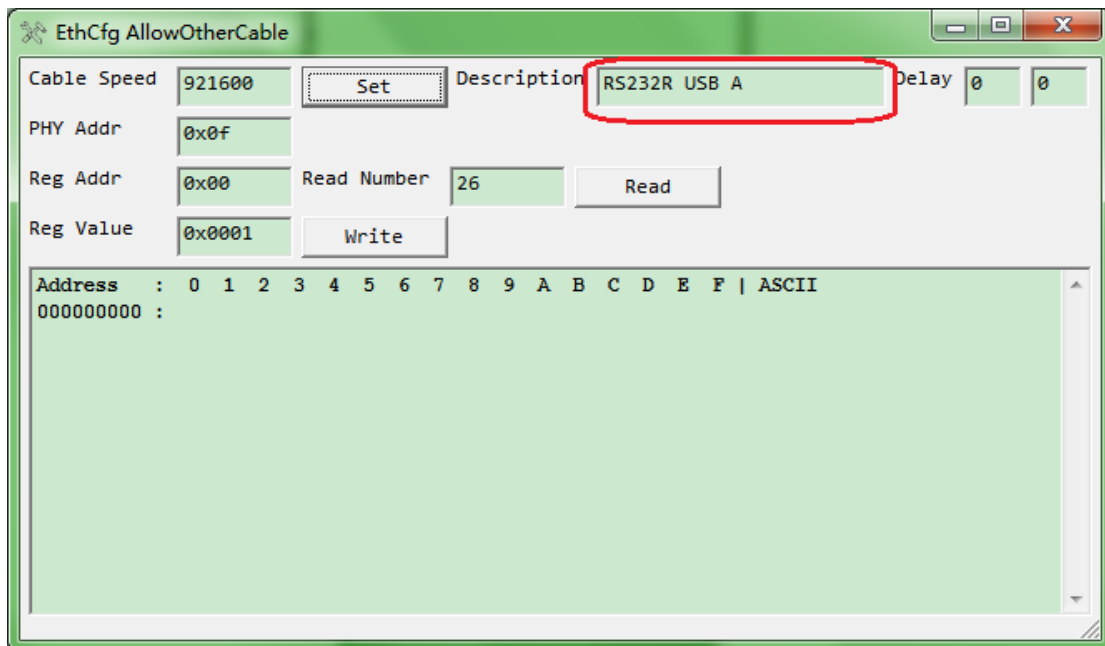
- If you are using the official cable, please skip this section.
- If this feature is not enabled in your software, you could not this is textbox. Please use the official cable.

- If you are not using the official cable and your supported supports it, please enter cable description of your cable.

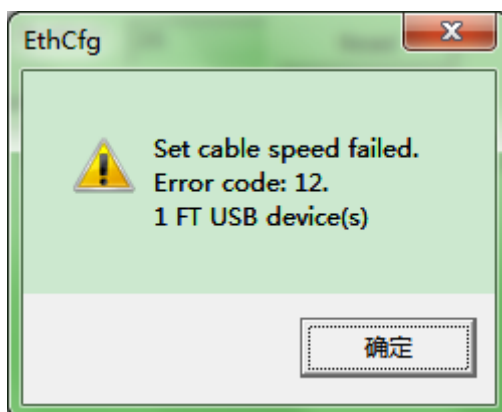
When the software failed when checking cables (the error code is 1), it will show you the detected description. Please fill the cable description which is connected to your MDIO (**Cable Description** is the string after “Device *n* is ”, *n* is zero based). See screenshot below:



In this example, the 1<sup>st</sup> channel is connected to MDIO, so the cable description should be RS232R USB A. See screenshot below:



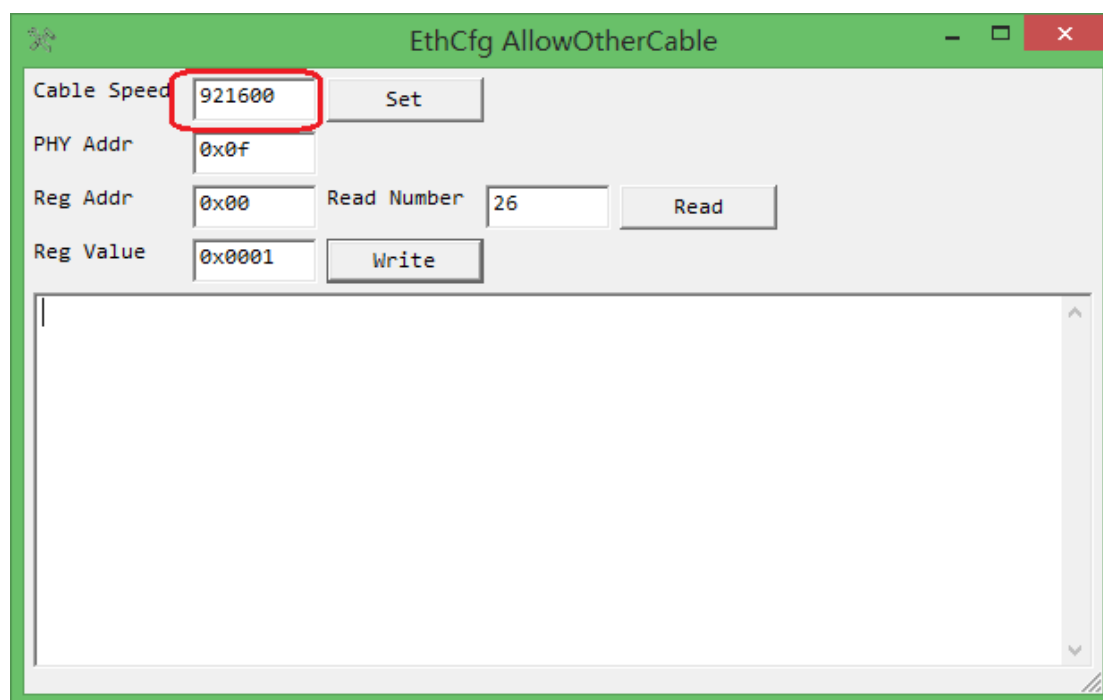
Note: Sometimes you may see no description is displayed. Here is an example:



There are two main reasons:

- 1, The USB device is enumerating.
- 2, The USB device is occupied by other program (e.g. another instance of EthCfg, or other terminal software using USB COM ports).

## Cable Speed

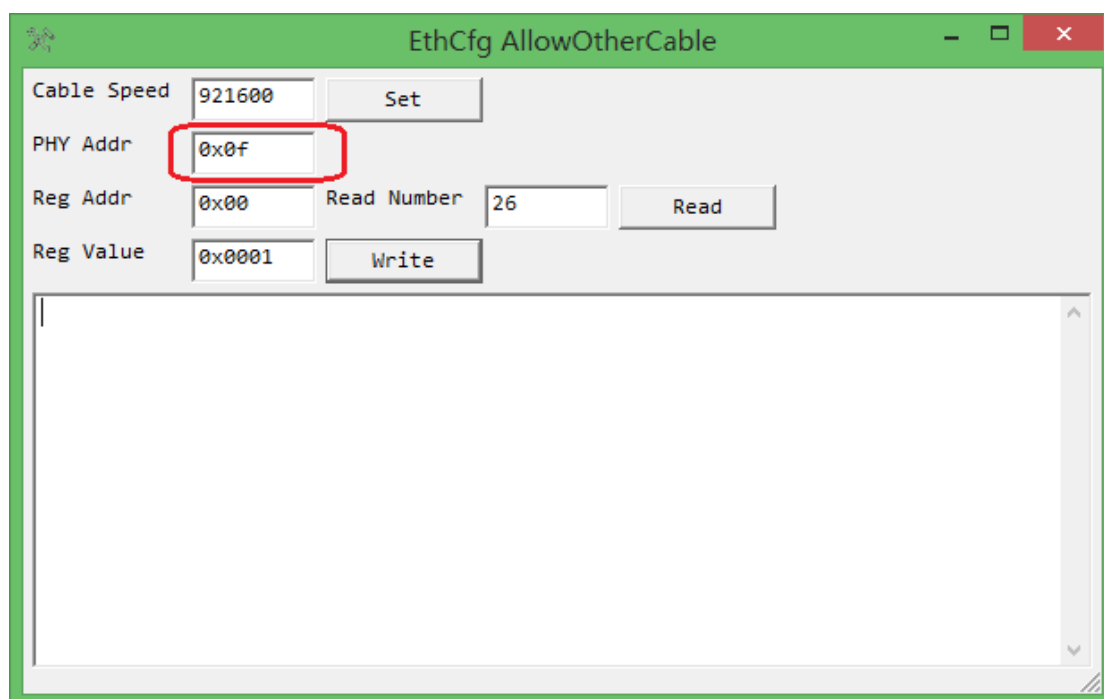


Default value is OK. No change is needed at most time.

If the cable speed is set properly, you will see a message box like below:

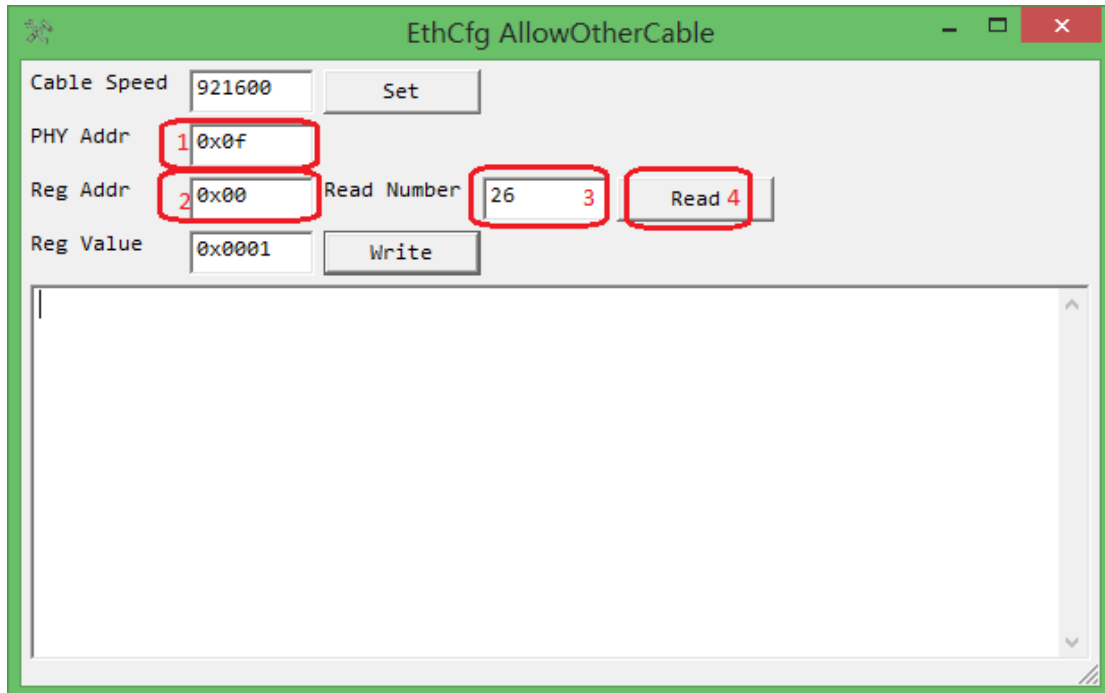


## PHY Address



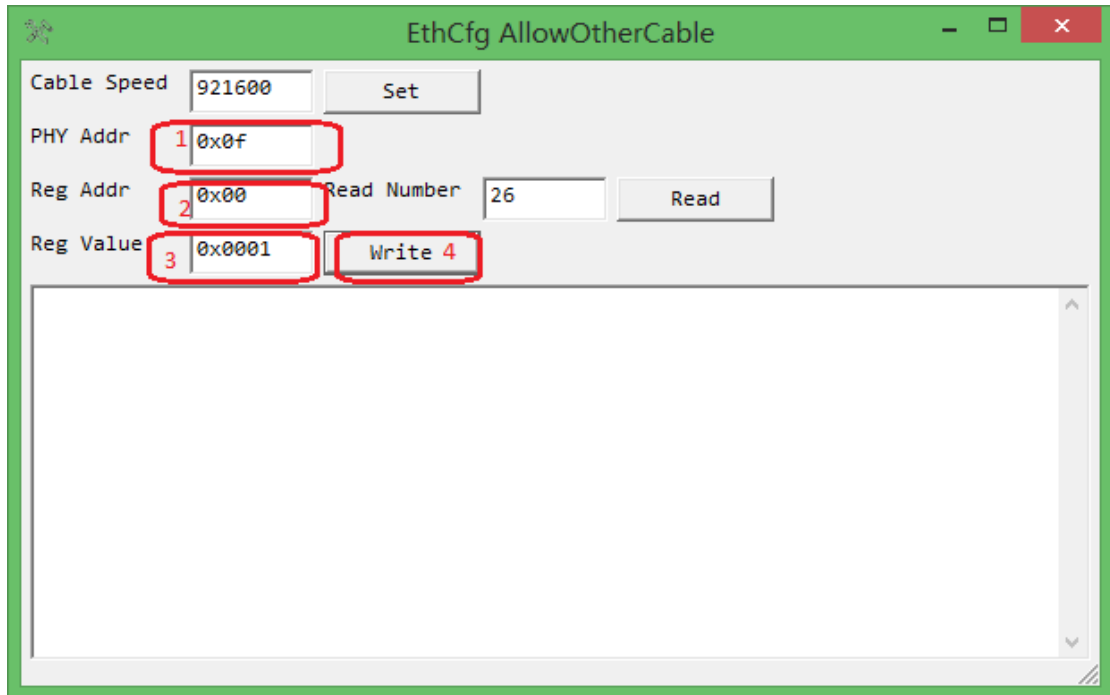
Input PHY address. Decimal and Hex are both accepted.

## Read Register Value



Check **PHY Address**, input **Register Address**, input **Register Numbers** to be read (you can read multi registers one time), then click **Read** button. Register values will be displayed if read successfully.

## Write Register



Check **PHY Address**, input **Register Address**, input **Register Value** to be written, then click **Write** button. A message box is popped if write successfully.



## Error Codes

Error Code	Error Info	Possible Causes	Suggestions
1	Initialization failed.	No cable detected;	Please check cable connections and try again; If the cable was once plugged out, please exit the software and run again.
2	Transmit address failed.	Bad cable; Target board H/W issue;	Use a good cable; Check target board H/W;



3	Read turn around failed.	Bad cable; Target board H/W issue;	Use a good cable; Check target board H/W;
4	Read data failed.	Bad cable; Target board H/W issue;	Use a good cable; Check target board H/W;
5	Write data failed.	Bad cable; Target board H/W issue;	Use a good cable; Check target board H/W;
6	Set cable speed failed.	Bad cable;	Use a good cable;
7	Cfg cable failed when reading	Bad cable;	Use a good cable;
8	Cfg cable failed when reading	Bad cable;	Use a good cable;
9	Set clock high failed when reading	Bad cable;	Use a good cable;
10	Read input data failed	Bad cable;	Use a good cable;
11	Set clock low failed when reading	Bad cable;	Use a good cable;
12	Check cable failed	No cable detected	User a good cable; If you are using 3 <sup>rd</sup> party cable, please ensure you have set the correct description;

Revision History:

Date	Version	Author	Changes
2015/4/21			Add error code 7 to 12; Add section 'Add Cable Description';
2015/4/18			Add error code 6;
2014/11/18			First Release;